




EVENTS

AT

1 8 8 0  O C I A L



# WELCOME

1880 has been at the forefront of the Singapore events scene for over 7 years, creating some of Singapore's most distinguished and thought-provoking events.

At 1880 Hong Kong, we plan to be no different. 1880 SOCIAL has a dedicated team that manages and produce our events, working closely with clients and trusted suppliers from start to finish. We can help you source entertainment and speakers, provide and manage any production and AV equipment you need, and help you style your event.

## **Event Concierge:**

Our event planners will help find the perfect space to accommodate your group, big or small.

## **Thoughtfully Designed Spaces:**

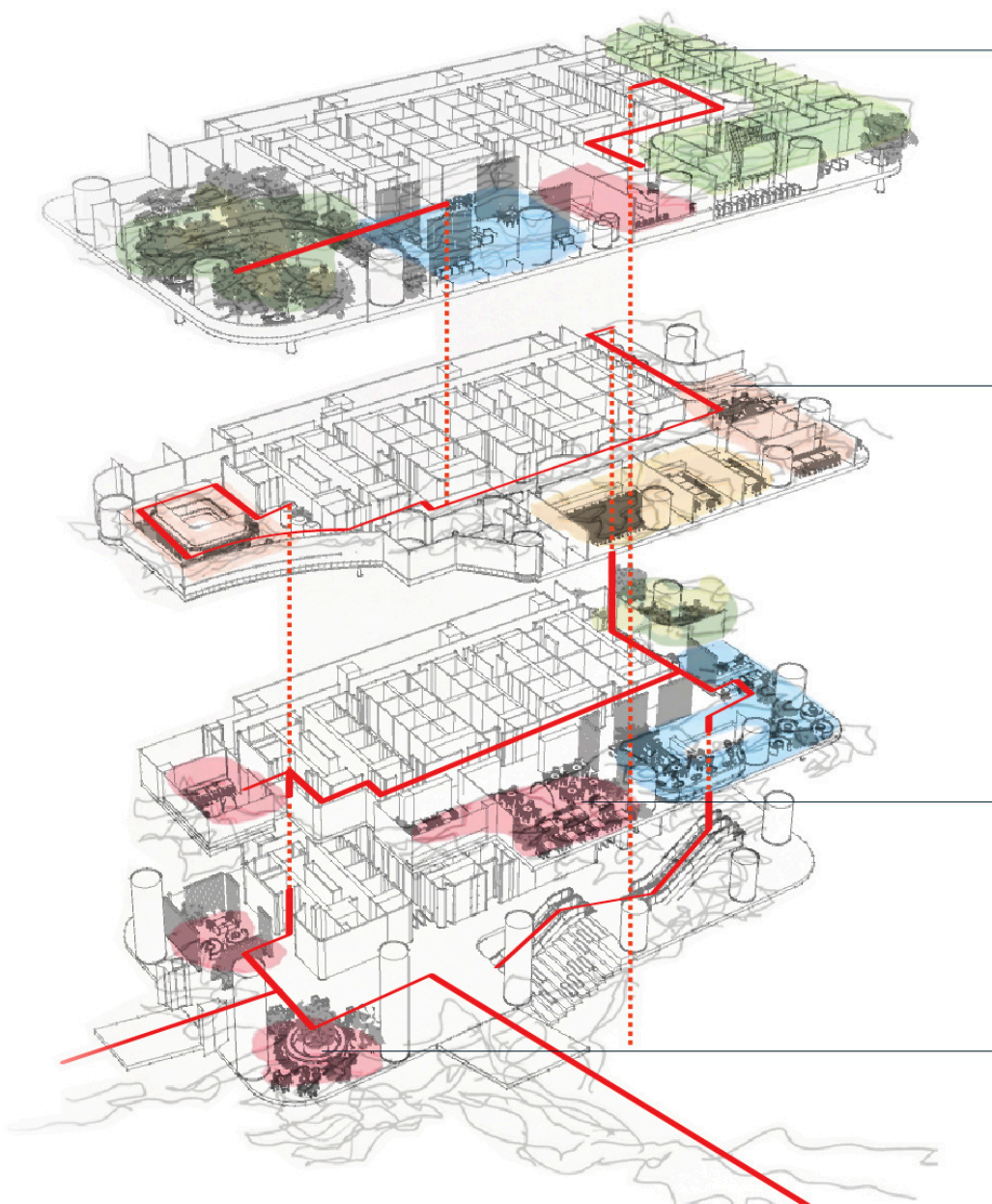
Our spaces and network of preferred A/V technicians are sure to elevate your event experience.

## **At Your Service:**

Our Community Teams are on the ground to help ensure your needs are met in real-time.

Beyond a venue, 1880 SOCIAL also ideates and curates our own events and programming, including workshops, panels, wellness classes - open for the Taikoo community and beyond to enjoy!

# 1880 AT TWO TAIKOO PLACE



## **4/F**

Members Club  
Leonie's Restaurant  
Lost/Found Spa  
QUARRY Gym  
Melati  
Sukki

## **3/F**

Social Lounge  
The Theatre  
The Greenscreen Room  
The Podcast Room  
Meeting Rooms 20° & 22°  
Collab Room  
Boardroom  
Recovery Room

## **2/F**

Té Bo  
Hoi Polloi  
The Sports Bar  
The Cube

## **1/F**

The Double

1 8 8 0 SOCIAL

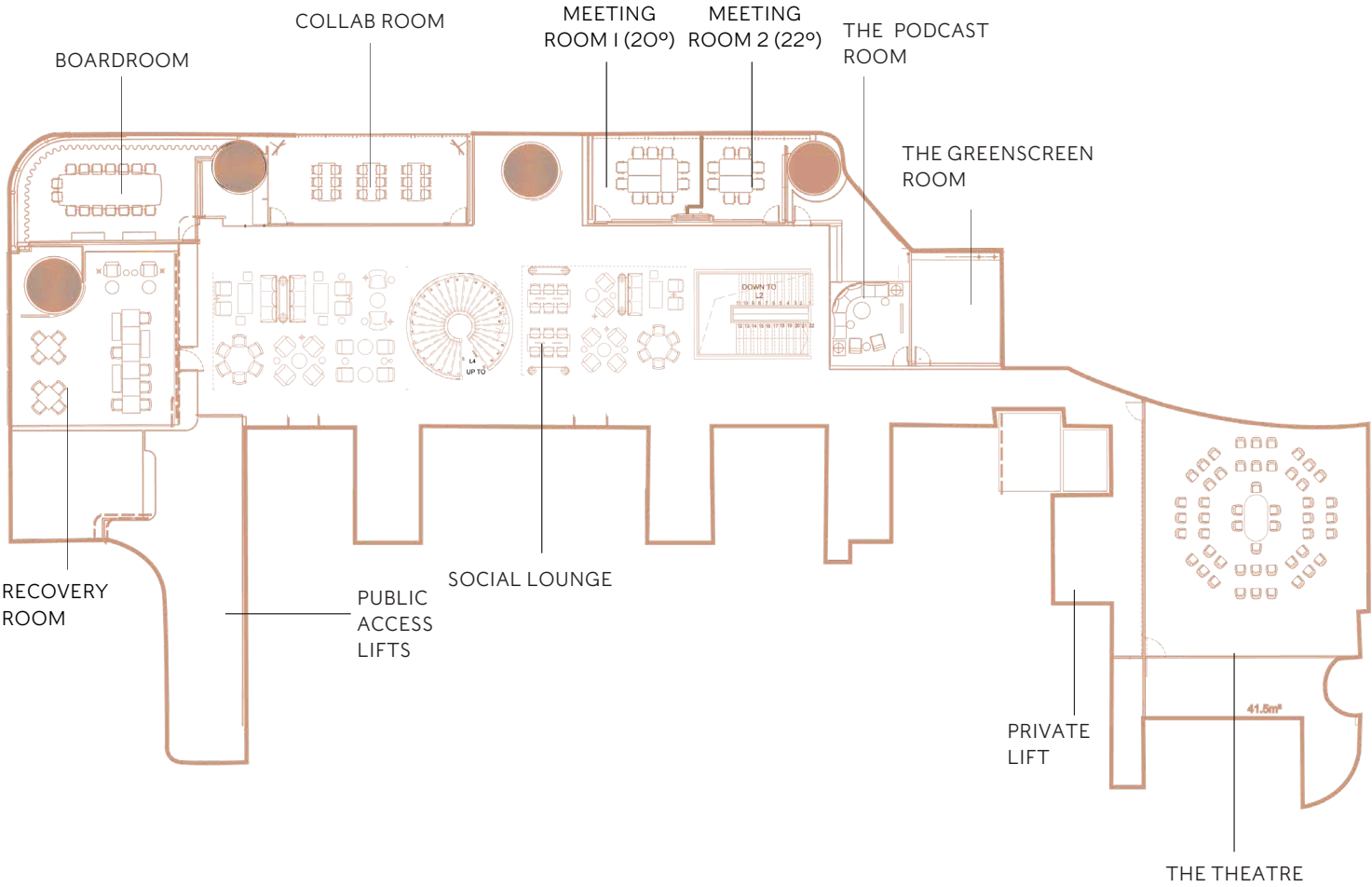
**1/F - 3/F**

**1880**  
HONG KONG

**4/F**

# WHERE THE MAGIC HAPPENS

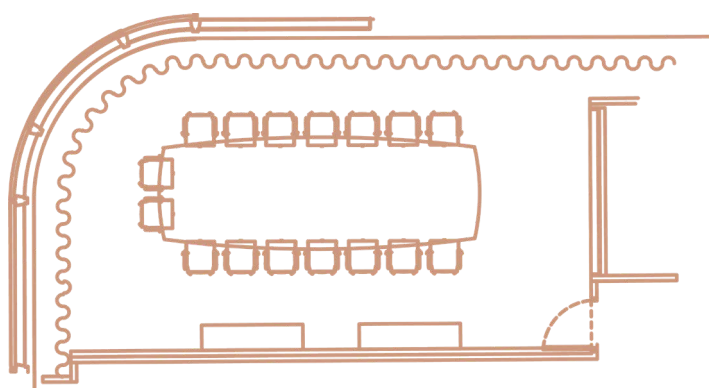
3/F, 1880 SOCIAL





# THE BOARDROOM

3/F, 1880 SOCIAL

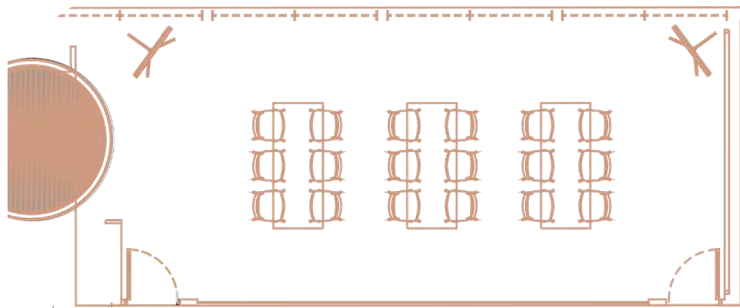


<b>TECHNOLOGY</b>	55' Inch Samsung TV Screen Logitech Collaboration Camera with Rally Bar Crestron Wireless Presenter QSC Speakers
<b>POSSIBLE EVENTS</b>	Film screenings Corporate events Business Meetings Pitches
<b>FLOOR SIZE</b>	53.9 sqm
<b>SETUP</b>	<b>CAPACITY</b>
Seated	16



# COLLAB ROOM

3/F, 1880 SOCIAL

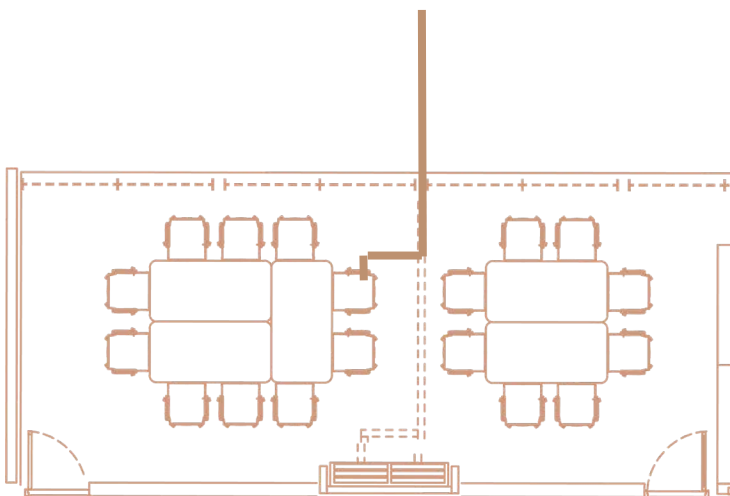


<b>TECHNOLOGY</b>	Portable TV Screen Portable Logitech Collaboration Camera with Rally Bar Crestron Wireless Presenter QSC Speakers
<b>FLOOR SIZE</b>	48.7 sqm
<b>SETUP</b>	<b>CAPACITY</b>
Standing	36
Seated	18



# MEETING ROOMS 1&2 (20° & 22°)

3/F, 1880 SOCIAL

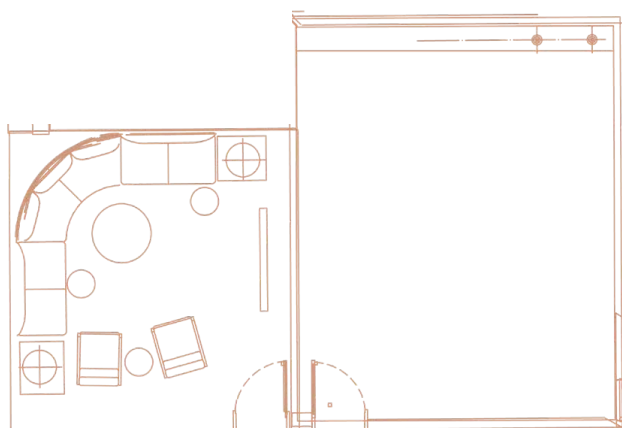


<b>TECHNOLOGY</b>	55' Inch Samsung TV Screen Logitech Collaboration Camera with Rally Bar Crestron Wireless Presenter QSC Speakers
<b>POSSIBLE EVENTS</b>	Meetings Screenings
<b>FLOOR SIZE</b>	46.8 sqm
<b>SETUP</b>	<b>CAPACITY</b>
Seated	Meeting room 1 (20°) : 10 Meeting room 2 (22°) : 8



# PODCAST & GREENSCREEN ROOM

3/F, 1880 SOCIAL



The Podcast room

The Greenscreen room

## TECHNOLOGY

Guide Gear Teleprompter  
 Canon DSLR Camera  
 BlackMagic Video Mixer  
 Mac Studio Video Editing Desktop  
 Shure Podcast Mic  
 Photogenic Multicolored Backdrop  
 Bi-Colored LED Panels  
 LED Ring Light  
 QSC Speakers

Available upon request.

## POSSIBLE EVENTS

Podcast  
 Social Media Content Class

## FLOOR SIZE

The Podcast room: 13.9 sqm  
 The Greenscreen room: 25.2 sqm

## SETUP

Seated  
 Standing

## CAPACITY

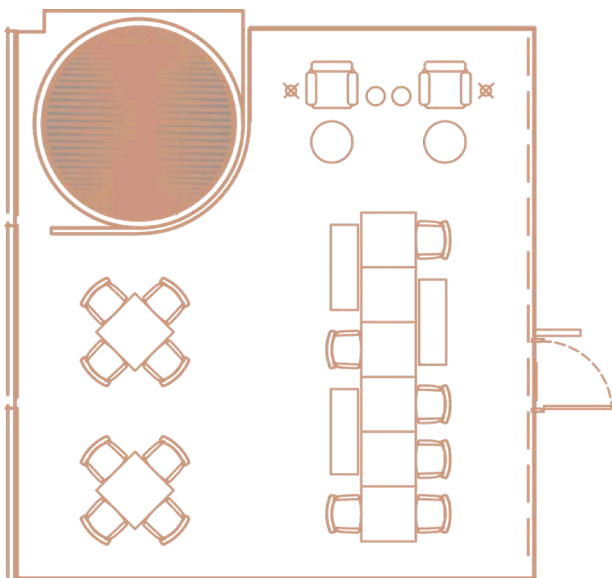
6-8 in The Podcast room  
 10 in The Greenscreen room





# RECOVERY ROOM

3/F, 1880 SOCIAL



**TECHNOLOGY** Portable TV Screen

**POSSIBLE EVENTS** Flexible  
Games Night  
Cocktail Evenings  
Book Club

**FLOOR SIZE** 68.3 sqm

**SETUP** **CAPACITY**

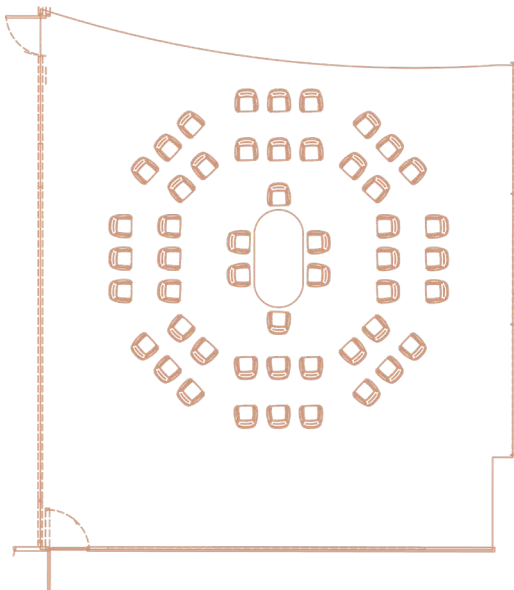
Standing 40

Seated 20



# THE THEATRE

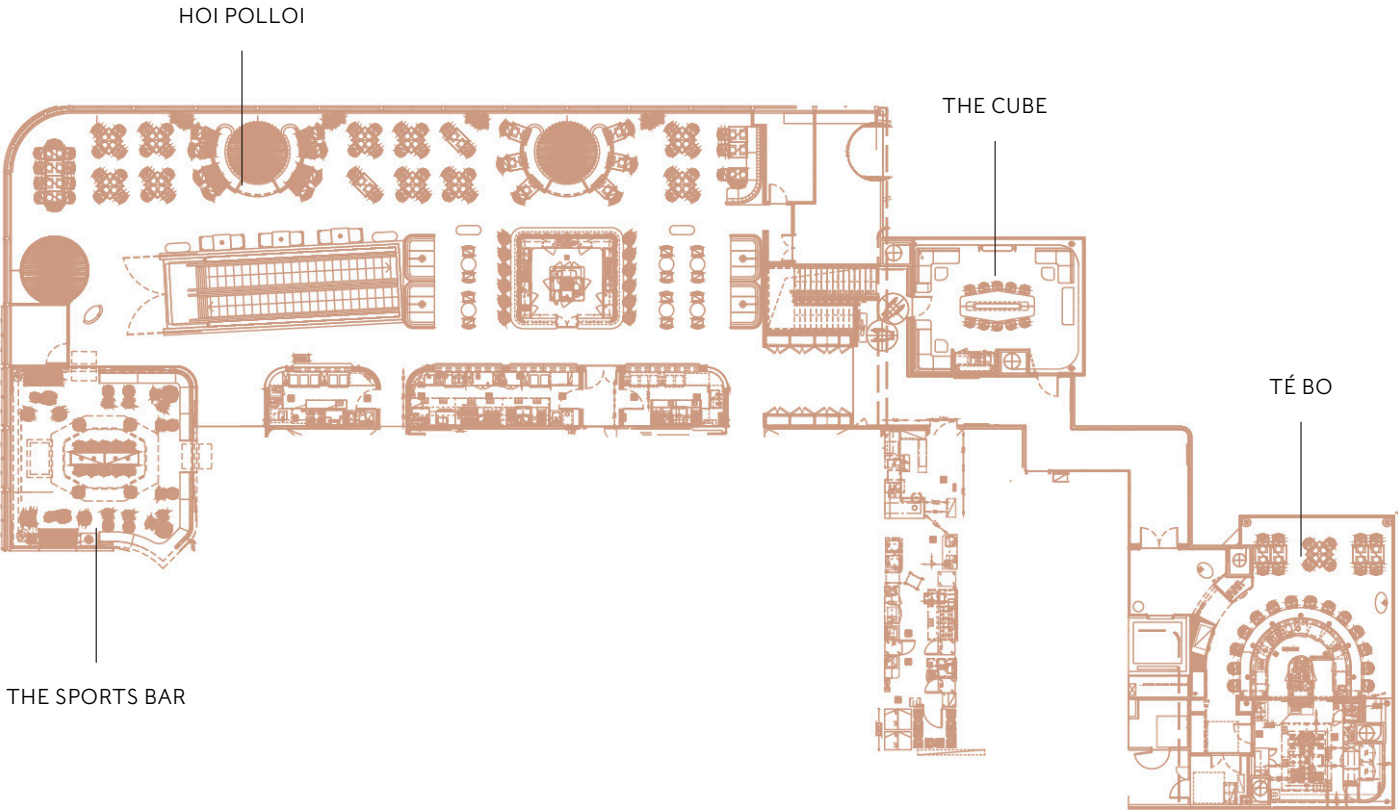
3/F, 1880 SOCIAL



<b>TECHNOLOGY</b>	8m by 2.5m LED Wall Content / Video Processor QSC Speakers Smart Lights
<b>POSSIBLE EVENTS</b>	Seminar Cocktail Party Seated dinner
<b>FLOOR SIZE</b>	141.1 sqm
<b>SETUP</b>	<b>CAPACITY</b>
Standing	200
Seated	Up to 100

# WHERE THE MAGIC HAPPENS

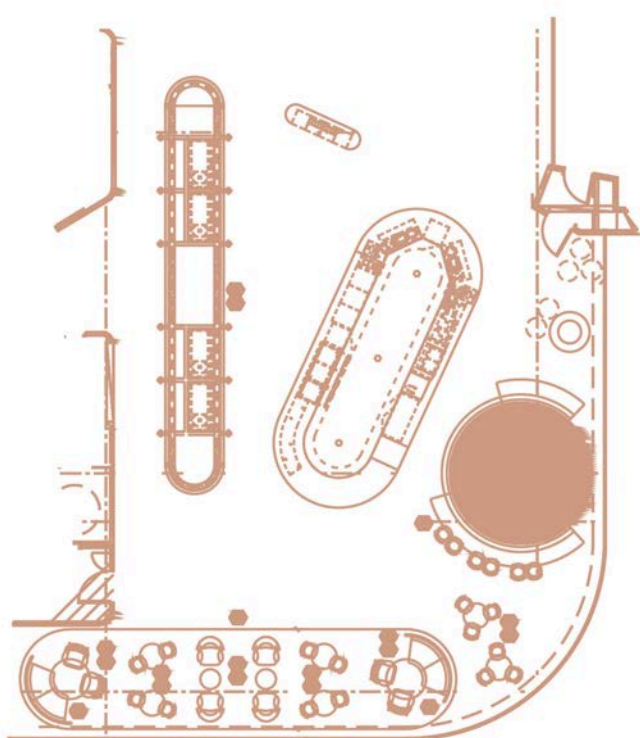
2/F, 1880 SOCIAL





# THE DOUBLE

I/F, 1880 SOCIAL



**TECHNOLOGY** Microphones  
Portable TV Screen

**POSSIBLE EVENTS** Corporate events  
Talks  
Pre-cocktail

**FLOOR SIZE** 169 sqm

**SETUP** **CAPACITY**

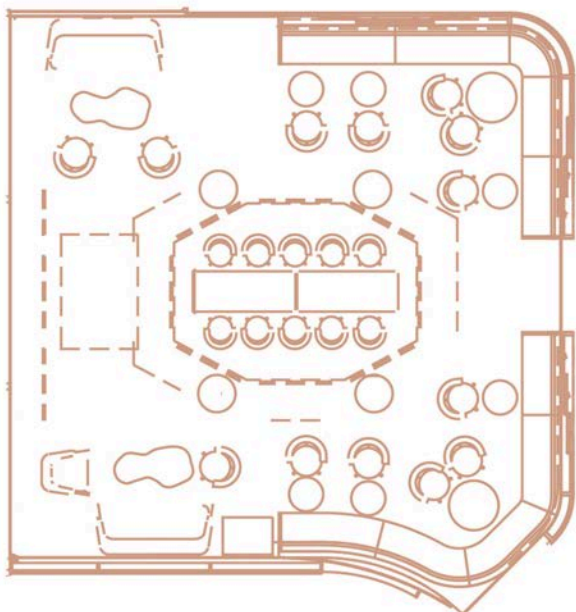
Seated 60

Standing 120



# THE SPORTS BAR

2/F, 1880 SOCIAL

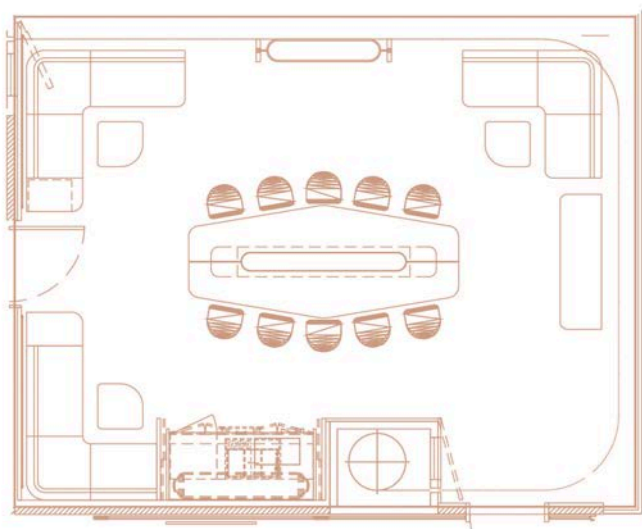


<b>TECHNOLOGY</b>	Microphones 6 TV Screens
<b>POSSIBLE EVENTS</b>	Corporate gatherings Games nights Small scale parties
<b>FLOOR SIZE</b>	100 sqm
<b>SETUP</b>	<b>CAPACITY</b>
Seated	40
Standing	80



# THE CUBE

2/F, 1880 SOCIAL



**TECHNOLOGY** Portable TV Screen

**POSSIBLE EVENTS** Corporate luncheon/dinner  
Meetings  
Private dining

**FLOOR SIZE** 60 Sqm

**SETUP** **CAPACITY**

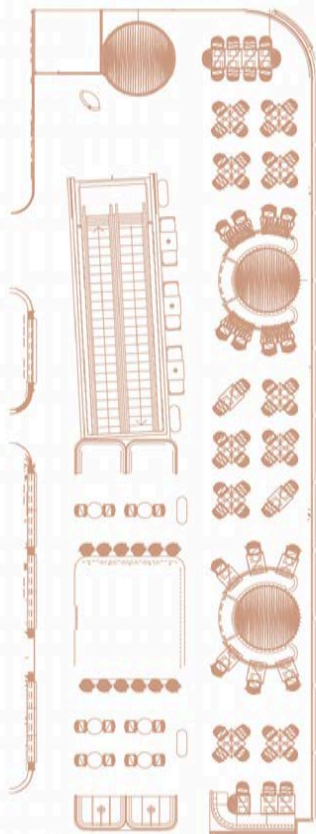
Seated 10

Standing 20



# HOI POLLOI

2/F, 1880 SOCIAL



## TECHNOLOGY

Portable TV screen  
Microphones  
Pioneer DJ set

## POSSIBLE EVENTS

Corporate luncheon/dinner  
Corporate gatherings  
Cocktail event

## FLOOR SIZE

420 Sqm

## SETUP

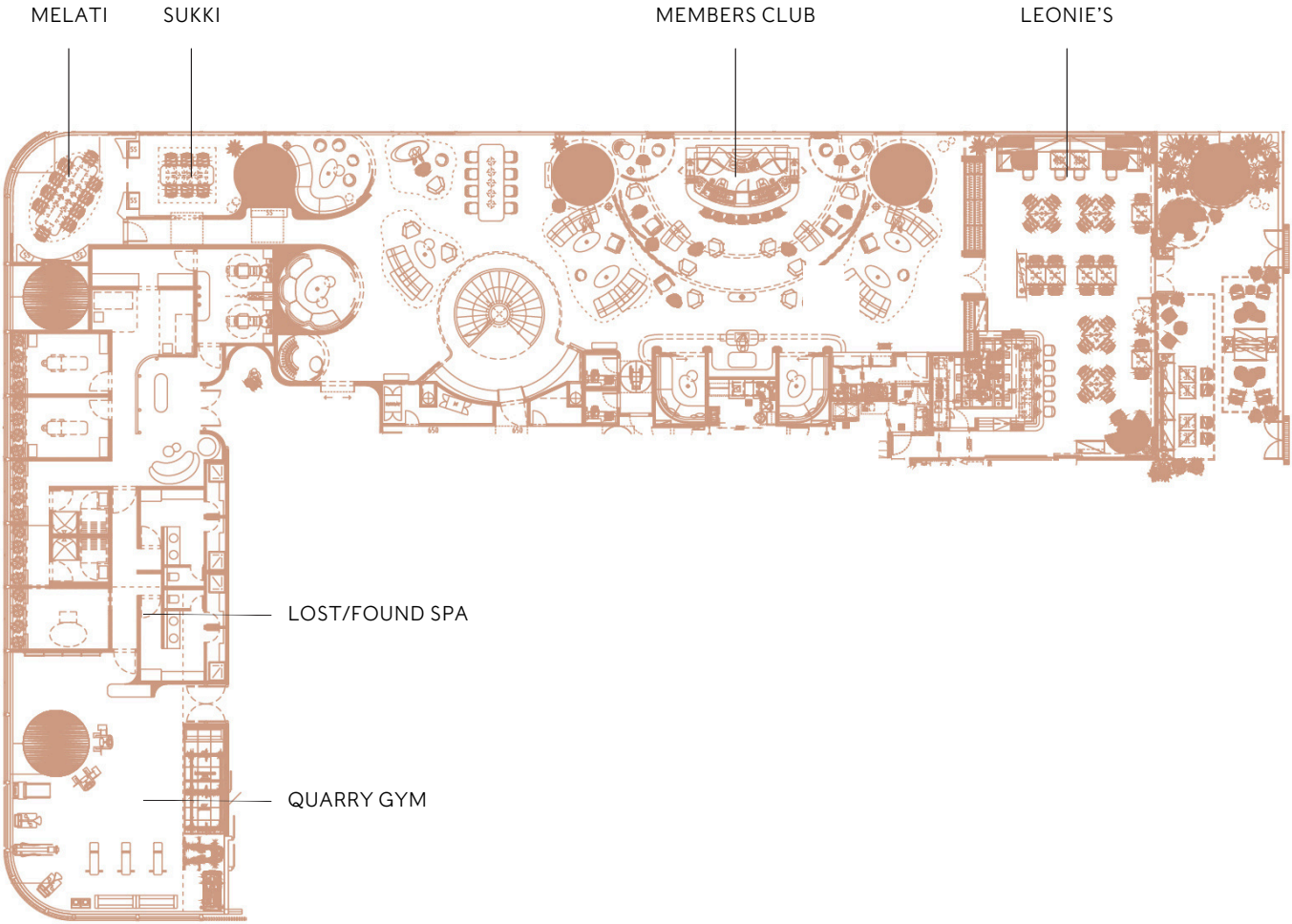
Seated  
Standing

## CAPACITY

110  
200

# WHERE THE MAGIC HAPPENS

4/F, 1880 HONG KONG





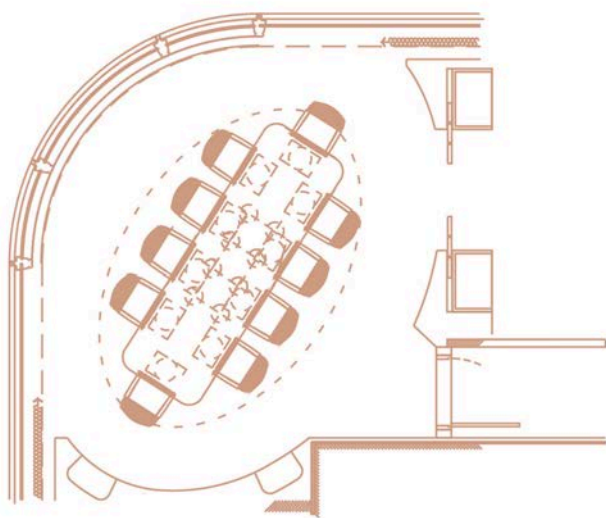


# MELATI

4/F, 1880 HONG KONG

*Members Only*

The Melati room can be joined with the Sukki room. Please inquire for more details.



<b>TECHNOLOGY</b>	Portable TV Screen
-------------------	--------------------

<b>POSSIBLE EVENTS</b>	Breakfast Lunch Dinner Masterclass
------------------------	---

<b>FLOOR SIZE</b>	33 sqm
-------------------	--------

<b>MINIMUM SPEND</b>	\$5,000 for lunch \$10,000 for dinner
----------------------	--

<b>SETUP</b>	<b>CAPACITY</b>
Seated	10-16

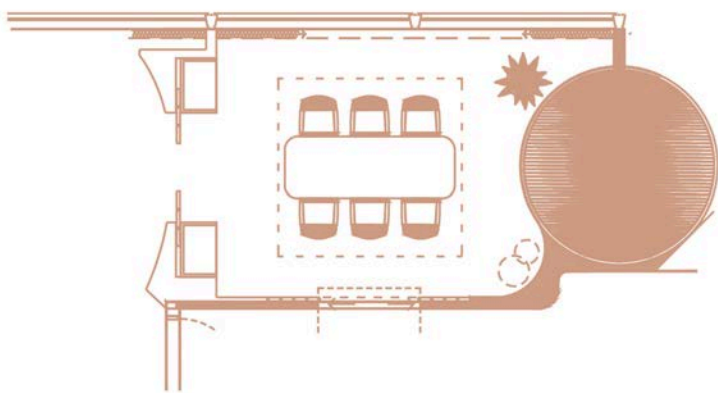


# SUKKI

4/F, 1880 HONG KONG

*Members Only*

The Sukki room can be joined with the Melati room. Please inquire for more details.



<b>TECHNOLOGY</b>	Portable TV Screen
-------------------	--------------------

<b>POSSIBLE EVENTS</b>	Breakfast Lunch Dinner Masterclass
------------------------	---

<b>FLOOR SIZE</b>	18 sqm
-------------------	--------

<b>MINIMUM SPEND</b>	\$3,000 for lunch \$6,000 for dinner
----------------------	---

<b>SETUP</b>	<b>CAPACITY</b>
Seated	6-8



## NOTES

### REFERRING TO US

Our name should always be written this way: 1880 SOCIAL.

### GETTING HERE

1880 SOCIAL is on Level 3, Two Taikoo Place, Taikoo Place, 979 King's Road, Quarry Bay, Hong Kong.

There are multiple access points, so please check with the team on the best way to reach the specific destination.

If you are driving, make sure you park close to or at "Two Taikoo Place" parking lots.

### PARKING

You can enjoy 3 hours of free parking at Taikoo Place, with a single, same-day electronic spending of HK\$200 at the selected shops and dining outlets. Redemption at Information Counter, I/F Dorset House, Taikoo Place.

# *MEMBERSHIP*

I880 is born out of an idea that is as simple as it is grand: that conversations can and will make the world a better place. We believe that where diverse minds gather, great ideas bloom.

The club is an expression of this - a salon for creators and explorers to meet, connect, and relax in good company and exceptional comfort.

The pursuit of passion remains our most instinctive obsession, and we live to stimulate both the intellect and the senses.

Come and experience I880 hospitality and enjoy our beautiful home in Taikoo Place, including a lounge, bar, members-only restaurant Leonie's, private dining rooms, terrace, gym and spa

For more information on our membership, please email [membership@i880.com.hk](mailto:membership@i880.com.hk)



1/F - 4/F, TWO TAIKOO PLACE,  
979 KING'S ROAD, QUARRY BAY

[WHATSAPP: +852 9071 1880](https://www.whatsapp.com/channel/00299a611880)  
EMAIL: [EVENTS@1880.COM.HK](mailto:EVENTS@1880.COM.HK)

**1880.COM.HK**